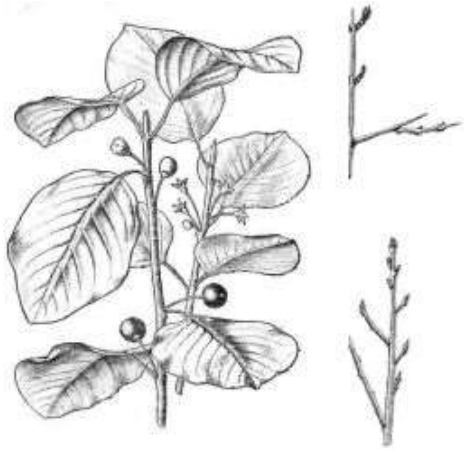


Buckthorn

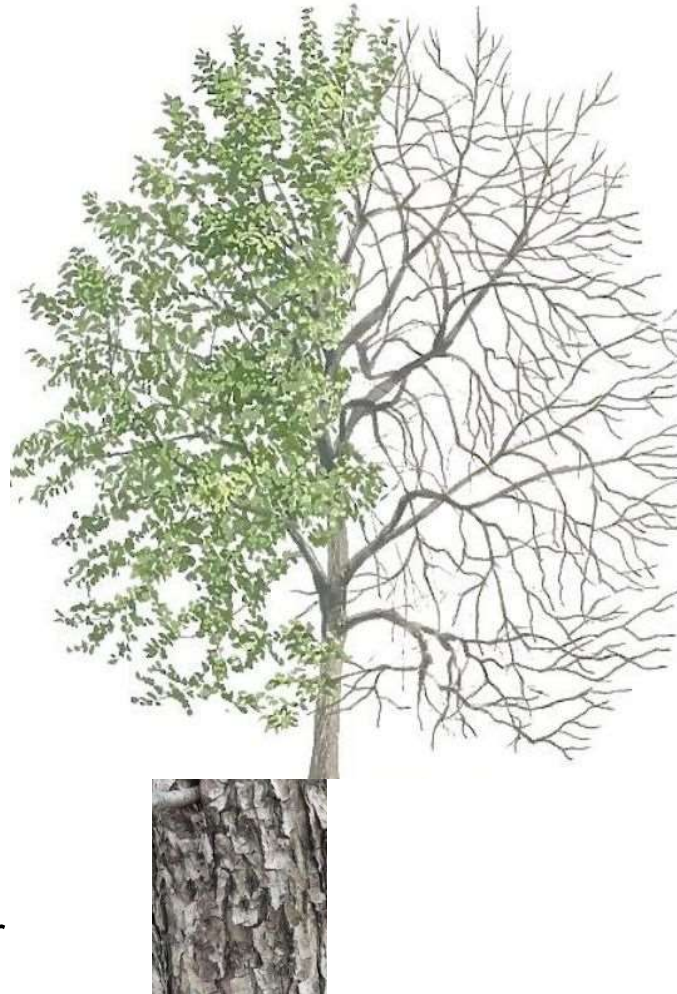


Common Buckthorn is one of the most problematic invasive plant species in North America.

It thrives in a variety of habitats, and light levels helping it outcompete native vegetation with significant negative impacts on native ecosystems.

It reduces biodiversity, alters soil chemistry, and disrupts habitat for wildlife species.

mtigoonski Nerprun cathartique



Common Buckthorn produces compounds that inhibit the growth of nearby plants.

This contributes to its ability to form dense monocultures in invaded areas as seen in this area of the trail.

It produces enormous numbers of small, round berries that ripen from green to black in the fall.

While these berries are eaten by birds, they are not as nutritious as native berries and can disrupt bird migration patterns.

Control methods include mechanical removal, prescribed burning and preventing seed spread.

Common Buckthorn is an alien invasive Species

Rhamnus cathartica

Learn more about this tree

