

# Rock Elm

Rock Elm is an ancient species, dating back to the Ice Age.

It has a long lifespan of several hundred years under favourable conditions.

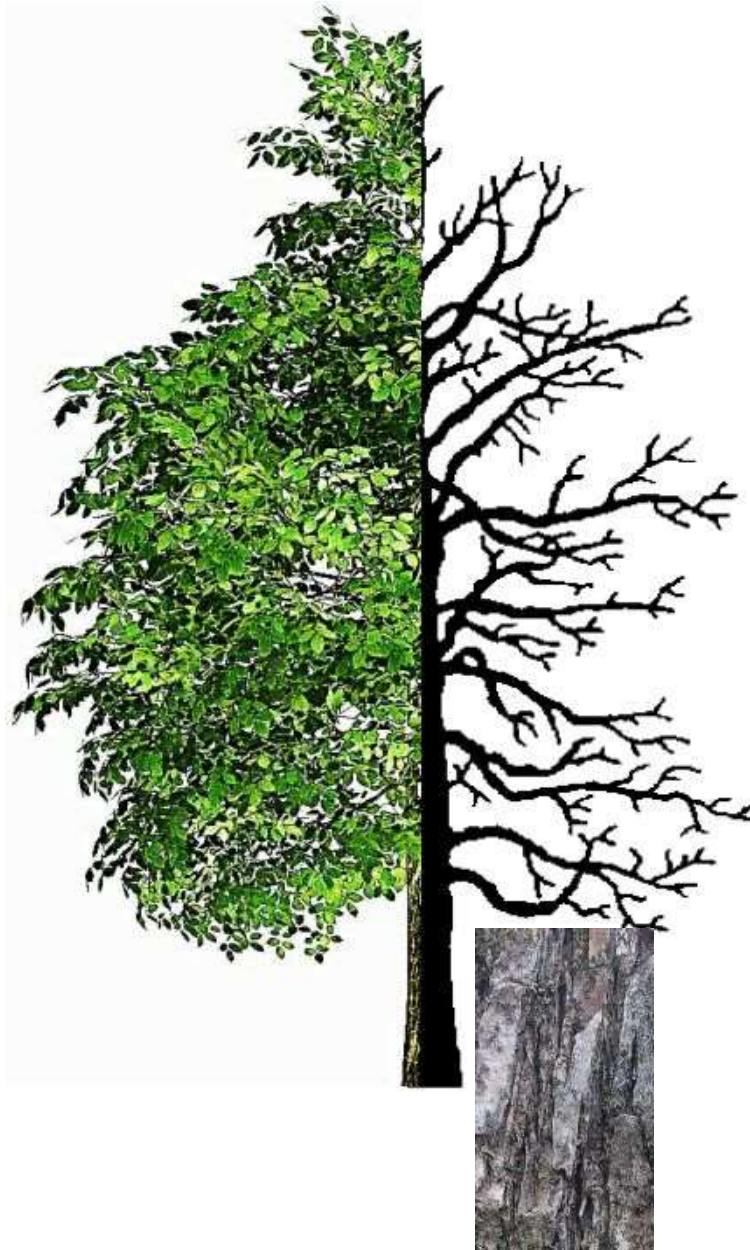
True to its name, it has remarkably dense and durable wood renowned for its strength and resistance to decay, making it popular for woodworking applications.

The bark is characterised by deep furrows and ridges, giving the tree a rugged and distinctive appearance as well as habitats for insects.

Woodpeckers and nuthatches often forage on its bark for insects, while deer browse its foliage.



niip



*Ulmus thomasi*

Orme liège



Rock Elm plays a crucial role in stabilising soil, preventing erosion, and supporting habitats for biodiversity.

Due to its toughness and versatility, Rock Elm was extensively used by Indigenous Peoples for making tool handles.

*Rock Elm is a native keystone species.*

Learn more about this tree

