

Sugar Maple

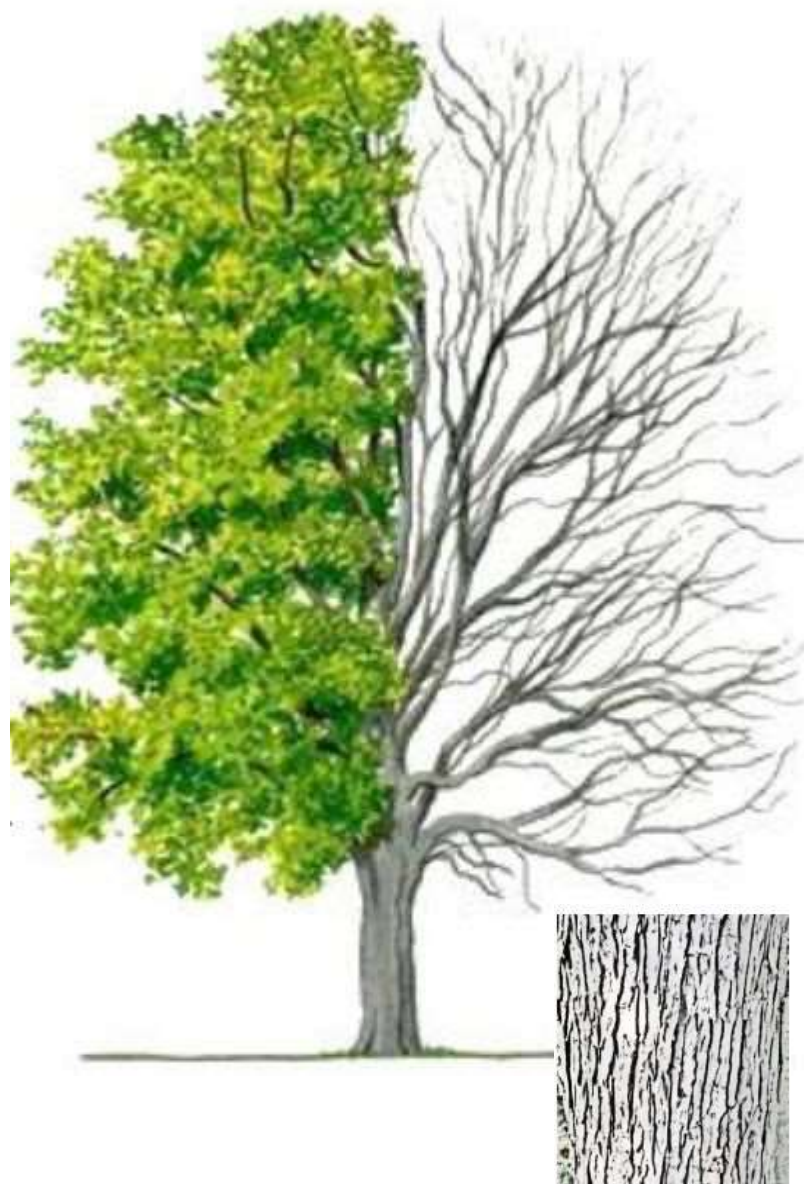
ininaatik

Érable à sucre



Maple trees are an iconic symbol of Canada.

The five lobed maple leaf appeared on the Canadian flag in 1965, symbolizing the country's natural beauty and cultural heritage.



For millennia, First Nations tapped and condensed maple sap from Sugar Maples to make maple syrup and used bark extracts as a cough remedy.

Canada produces over 70% of the world's supply of maple syrup.

Maple wood is highly valued for flooring, furniture and a range of other uses.

The Sugar Maple is a native keystone species.



Acer saccharum

Learn more about this tree

