

10: The Willows

Turn around or continue upstream for a longer adventure.

11: Upstream paddling (all flat water)

- Montague Boat launch 5.5 km.



- Irish Creek 9.3 km.

Early alternate route for the canal, through Jasper



- Kilmarnock Apple Orchards



- Kilmarnock Locks 11.5 km.



RiverPaddle Recreational Trail



Merrickville
District
Trails Society



UNESCO World Heritage Site
Rideau Migratory Bird
Sanctuary

Early boaters on the Rideau



1a - 1b: Launch from the Public Boat Launch or from the Lions Club Campground.

- Are you properly dressed?
- Are you wearing your PFD?
- Do you need to clean your boat?

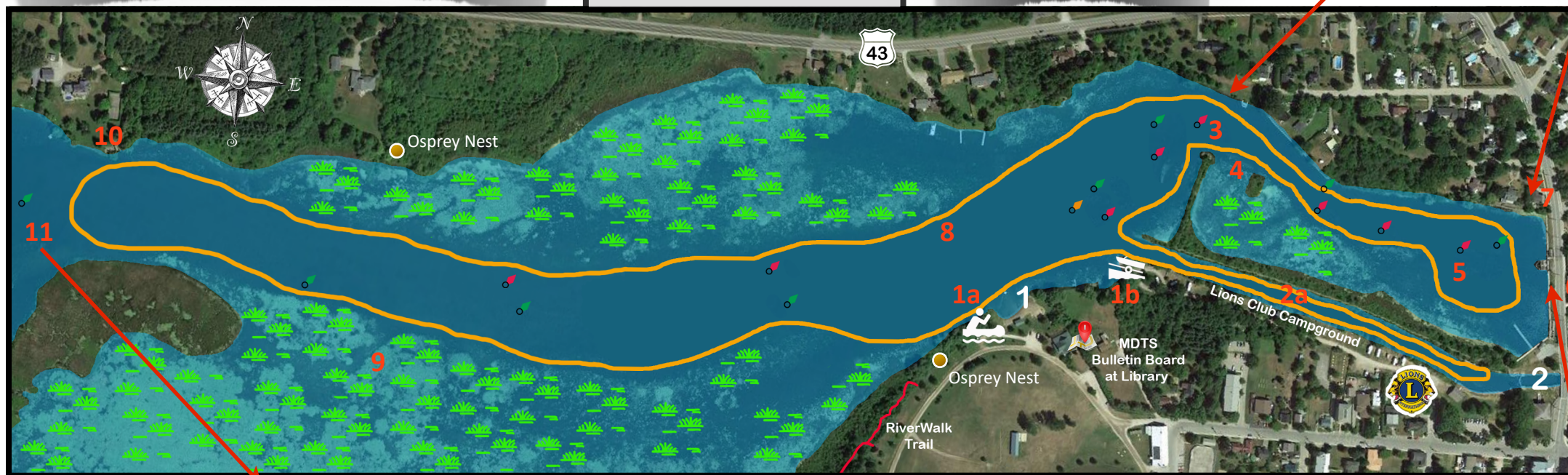


Photo 1



Photo 2

<http://www.rideaufriends.com/documents/depot-to-dam-trail-brochure-e.pdf>



2a: Entrance to canal cut and locks

Birds and beaver and campers!

3: Old stone dam (c1830)

Pass above old dam, look at quarried stones when on other side.

4: Into the basin

Paddling over site of wooden dam extensions (Easter 1908, Photo 1) to weir at far shore: demolished 1914.

5: Explore the basin

Was the Merrickville Rapids (Photo 2) until current dam in 1914. Pondlife and littoral zone. Watch for rocks in the shallows.

6: Watchorn Wollen Mill (Photo 3)

Was active until the 1950's, now ruins.

7: The Merrick Tavern (c1830)

This stone house is now a private residence (Photo 2).

9. The Stumplands

- Many of the stumps and logs underwater are over 200 years old, dating from the original flooding when the old dam first brought the water up to canal levels. They provide nesting sites and a foothold for mosses, grasses, and even new trees.
- Floating and emergent plants provide shade, shelter, and food for many animals, and the deep muck on the bottom nurtures invertebrate and amphibious life through four seasons.
- Whatever your craft - canoe, kayak, paddle board or rowboat - be cautioned that submerged trees, shallow waters and thick vegetation in this area can restrict paddling, and demand slow movement.

Legend



Public Boat Launch



Lions Club Boat Launch



Public Beach



Locks



Lions Club Kayak/canoe rental at campground office



Open Wetlands



Approximate Buoy Location

GRAPHIC SCALE

0 50 100 meters

8: Out into the channel, along the far (north) shore

Navigation buoys mark channel for boaters.

Stop, Look and listen: herons and osprey in the air, insects and frogs on the water, and waterlilies, cattails and flag irises all around.



Photo 3

<https://parks.canada.ca/lhn-nhs/on/rideau/activ/sentier-trail/merrickville>



KAYAK & CANOE

RENTALS

Fun for all ages!

Enjoy Paddling the Scenic Rideau Canal!

Come to **Merrickville (Jewel of the Rideau)** and enjoy sightseeing on the beautiful Rideau River with its canal, locks, bird sanctuary, historical homes, and more!

*PFDs (youth to adult) & safety kits provided.

*Kayak launch ramp to facilitate entering and exiting the water.

*Rent a single kayak (\$20/1 hr or \$30/2 hrs), or a tandem kayak or canoe (\$30/1 hr or \$45/2 hrs).

Inquire at Lions Club Campground Office
10 St John Street, Merrickville, Ontario.

(613-269-3702)

www.merrickvillelionscampground.ca



Check list of selected fauna and flora that you may find

Common Loon
Great Blue Heron
Green Heron
Canada Goose
Mallard
Wood Duck
Common merganser
Trumpeter Swan
Ring-billed Gull
Common Tern
Black tern
Osprey
Red-winged Blackbird
Beaver
Muskrat
River Otter
Snapping Turtle
Painted Turtle
Water Snake

☐☐☐☐☐☐☐☐☐☐☐☐☐☐☐☐☐☐☐☐☐

Waterweed (Elodea)
Pondweed
White water lily
Bullhead water lily (yellow)
Cattail
Blue flag
Yellow flag

☐☐☐☐☐☐☐☐☐☐

Rideau Roundtable pamphlet links



Wildlife Turtles



The Rideau Migratory Bird Sanctuary was designated by the Canadian Wildlife Service, in 1957, to provide a feeding and resting area for migrating birds. In 1994, a federal Act formalized an agreement between Canada and the US to protect and conserve migratory birds and their nests. The open wetlands of the Sanctuary feature a diversity of aquatic and riparian vegetation, providing a rich habitat for resident reptiles, amphibians, mammals and fish. QR codes lead to photos of flora and fauna of the area, as provided by Friends of the Rideau and Rideau Roundtable.



[Rideau Wildlife – Rideau Roundtable](#)



[Invading Species Awareness Program](#)



Stewardship – *Miriam Webster* defines stewardship as the careful and responsible management of something entrusted to one's care. The RiverPaddle Trail provides an opportunity for water enthusiasts to enjoy Merrickville's stretch of the Rideau waterway while valuing our responsibility to minimize our impact on all lifeforms of the river ecosystem, and beyond.

Please do not disturb animals or their homes, remove vegetation, or leave any traces of your visit. The QR code leads to the Invading Species Awareness Program Facebook page, which urges boaters to Clean, Drain and Dry their craft before travelling to other water bodies.



[Fauna of the Rideau – Friends of the Rideau](#)



Merrickville RiverPaddle Trail



Merrickville
District
Trails Society



'Like' us on



2023